



NOVO CHROME-PLATED

height 1808 mm, length 600 mm. Chrome-plated finish (cod. 50).



Technical features:

- steel towel warmer radiator
- horizontal elements featuring round tubes 23 mm diameter
- side manifolds with semi-oval section 40x30 mm
- manifold threading and central connections (50 mm) 1/2" Gas right
- maximum working pressure 8 bar
- maximum working temperature 95°C

Price included:

- pair of chrome-plated chela wall brackets
- wall spacers
- 1/2" chrome-plated air vent

Extension of Guarantee

Irsap guarantees only the hydraulic seal of NOVO Chrome-plated radiators for 10 years, starting from sales in 2009.

The chrome plating is guaranteed for the period of time established by law, in any case not less than 24 months.

Special options and surcharges:

Radiators can be supplied with no. 1 1/2" coupling welded laterally for the connection to a single-pipe system and no. 2 1/2" couplings welded laterally to a manifold (Cod. B10). If the second coupling comes at a height that is lower than the half the radiator's total height, a diaphragm is welded inside to the manifold for optimized water circulation.

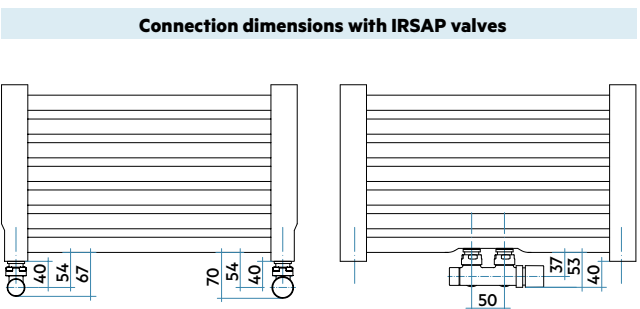
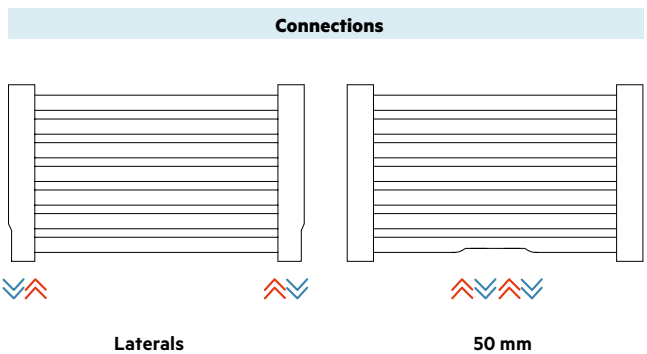
Surcharge for two 1/2" couplings welded to a lateral manifold and an internal diaphragm **(Cod. B10)**

Surcharge for two 1/2" couplings welded to a lateral manifold and an internal diaphragm **(Cod. B 99)**

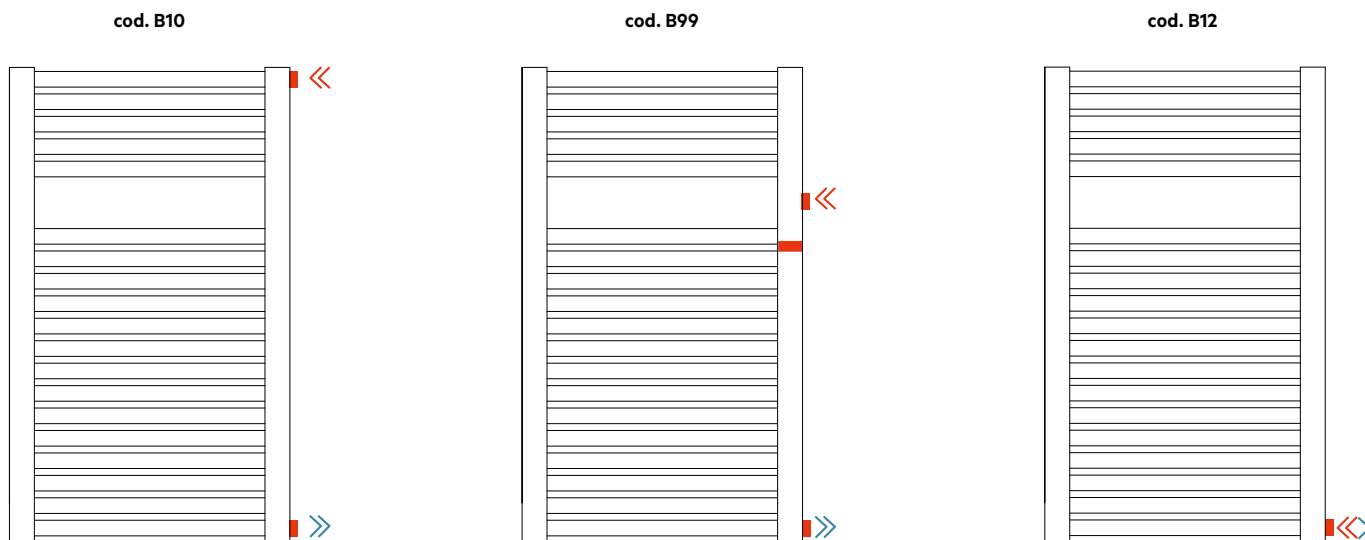
Surcharge for one 1/2" coupling welded to a lateral manifold **(Cod. B12)**

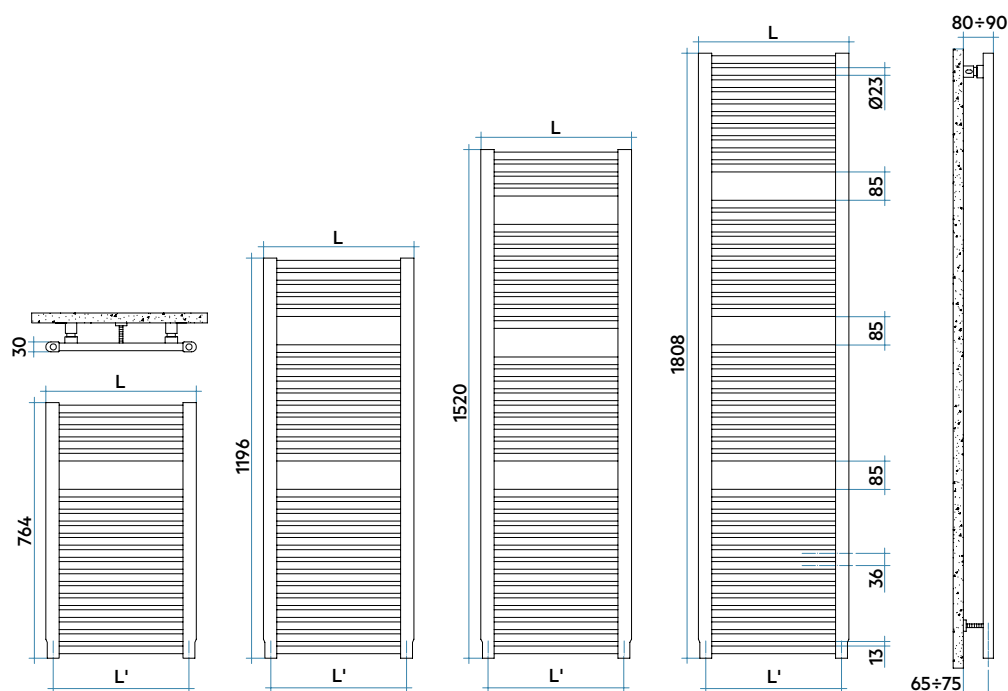
CAUTION: when this latter special working is present, correct operation is possible only when the lower outlet coupling is in axial alignment with the lowest pipe. Whenever this coupling is higher, all the pipes below will remain cold because they are not involved in the flow of water.

Finishes available	Surcharge
Chrome-plated	



For other types of connections see pag. 414





Model	Code	Depth	Height	Conn.		Thermal Power							
				Width	centre	Weight	Cap.	$\Delta t=50^{\circ}\text{C}$	$\Delta t=40^{\circ}\text{C}$	$\Delta t=30^{\circ}\text{C}$	$\Delta t=20^{\circ}\text{C}$	Exp.	
		mm	mm	mm	mm	Kg	lt	Btu/h	Watt	Watt	Watt (°)	Watt	n.
764 19 rails 1 espace	NLP045 B 50 IR 01 NNN	30	764	450	406	5,3	3,9	914	268	203	142	86	1,245
	NLP050 B 50 IR 01 NNN	30	764	500	456	5,8	4,3	1001	293	222	155	94	1,244
	NLP060 B 50 IR 01 NNN	30	764	600	556	6,7	5,0	1175	344	261	183	110	1,243
	NLP075 B 50 IR 01 NNN	30	764	750	706	10,7	5,6	1434	420	319	223	135	1,241
1196 29 rails 2 espaces	NLM045 B 50 IR 01 NNN	30	1196	450	406	8,1	6,1	1218	357	269	186	111	1,275
	NLM050 B 50 IR 01 NNN	30	1196	500	456	8,8	6,6	1353	396	299	207	124	1,272
	NLM060 B 50 IR 01 NNN	30	1196	600	556	10,3	7,6	1627	477	359	250	149	1,267
	NLM075 B 50 IR 01 NNN	30	1196	750	706	16,4	8,6	2039	598	451	314	189	1,259
1520 36 rails 3 espaces	NLL045 B 50 IR 01 NNN	30	1520	450	406	10,2	7,6	1656	485	365	252	150	1,279
	NLL050 B 50 IR 01 NNN	30	1520	500	456	11,0	8,2	1821	534	401	278	166	1,277
	NLL060 B 50 IR 01 NNN	30	1520	600	556	12,8	9,5	2151	630	475	329	196	1,273
	NLL075 B 50 IR 01 NNN	30	1520	750	706	20,4	10,8	2646	776	585	406	243	1,266
1808 44 rails 3 espaces	NLG045 B 50 IR 01 NNN	30	1808	450	406	12,3	9,2	1976	579	436	302	180	1,272
	NLG050 B 50 IR 01 NNN	30	1808	500	456	13,3	10,0	2180	639	481	334	200	1,269
	NLG060 B 50 IR 01 NNN	30	1808	600	556	15,5	11,5	2587	758	572	398	238	1,262
	NLG075 B 50 IR 01 NNN	30	1808	750	706	24,8	13,1	3198	937	709	494	298	1,252

Mix. Funct.	Code
0	-
300	ANRES300WDI50
300	ANRES300WDI50
400	ANRES400WDI50
300	ANRES300WDI50
400	ANRES400WDI50
400	ANRES400WDI50
400	ANRES400WDI50
400	ANRES400WDI50
400	ANRES400WDI50
700	ANRES700WDI50
700	ANRES700WDI50
400	ANRES400WDI50
700	ANRES700WDI50
700	ANRES700WDI50
400	ANRES400WDI50
700	ANRES700WDI50
700	ANRES700WDI50
1000	ANRES1000WDI50

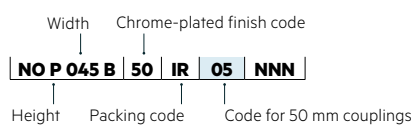
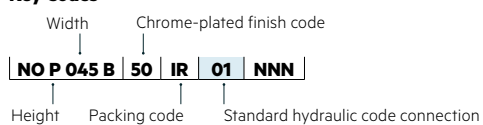
(*) Thanks to the high performance of Irsap NOVO CHROME-PLATED radiators, the ideal Δt for low temperature projects is Δt at 30°C.

For Δt different from 50°C use the formula: $Q=Q_n (\Delta t / 50)^n$

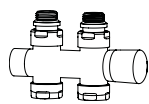
To order a radiator in the mixed version put the code of the Standard version + the code of the corresponding electric heater

Example: Mod. 1808 x 450: **NLG045 B 50 IR 01 NNN** (€ 726,90) + **ANRES400WDI50** (€ 175,13) = Tot. € 902,03

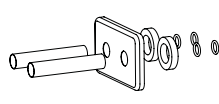
Key Codes



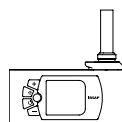
Decorative & Technical Accessories



Kit Valves and Lockshield valve
Pag. 562



Pipe cover kit
Pag. 566



Electronic Control
Pag. 574

